



# Apple Remote Access MultiPort Server 2.1

## PCI version

### Features

#### Ease of use

- Takes only minutes to set up a server and to add users or ports as needed
- Provides built-in context-sensitive help

#### Multilevel security

- Provides a variety of sophisticated security features, making it one of the most secure remote access servers available
- Is supported by leading third-party security vendors, so administrators can choose to augment its built-in capabilities with additional security modules

#### Scalable solution

- Allows a Macintosh computer, Power Macintosh computer, or a Workgroup Server to support up to 16 simultaneous dial-up connections<sup>1</sup>
- Runs on a variety of Macintosh computers, so you can choose the system that's appropriate for your needs

#### Powerful administrative capabilities

- Allows flexible port configurations
- Offers comprehensive user-management facilities
- Tracks resource usage and automatically generates an activity log that can be exported for further analysis

#### Flexible client capabilities

- Supports a variety of connections, including cellular and ISDN<sup>2</sup>
- Is fully integrated with the Mac OS, so remote users can work with such familiar tools as the Chooser, Alias Manager, and the Finder

<sup>1</sup> The Apple Remote Access MultiPort Server includes support for 6 ports and is available for Power Macintosh computers and Workgroup Servers with a PCI expansion bus (Mac OS based). Support for 12 or 16 ports requires purchase of 1 or 2 additional Apple Remote Access MultiPort Server packages respectively.

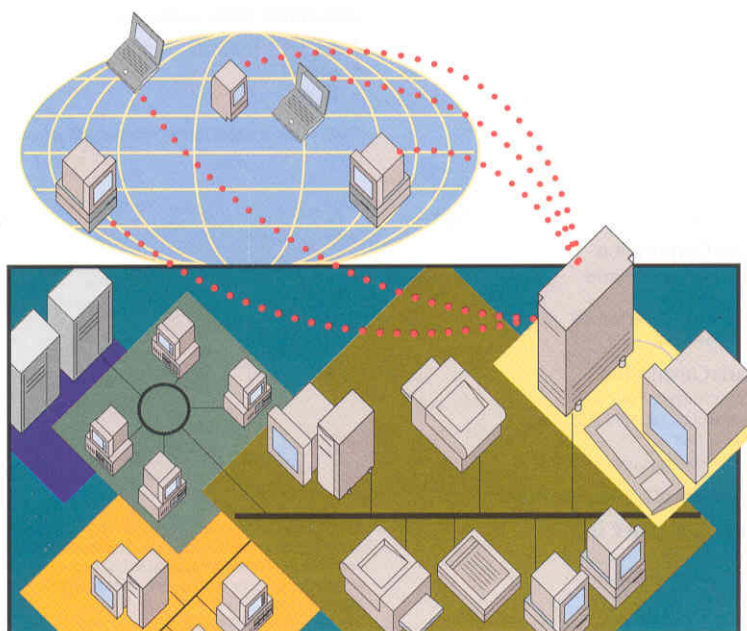
<sup>2</sup> ISDN and cellular connections require additional Apple or third-party products.

The Apple Remote Access MultiPort Server provides a flexible, scalable, and secure way to offer network access to large numbers of remote or mobile users. Used in conjunction with one or more Apple Remote Access Serial Cards, it allows a Macintosh computer or a Workgroup Server to support up to 16 simultaneous dial-up connections.<sup>1</sup> This provides an ideal solution for workgroups or entire organizations that want to enable employees to work productively and efficiently no matter where their location—whether at home, out of town, or even out of the country.

Unlike conventional complex server software, the Apple Remote Access MultiPort Server is designed to streamline administrative tasks, while maximizing administrator productivity and control. The software installs in minutes and features sophisticated management capabilities, allowing administrators to flexibly manage and maintain connections. Adding ports is simple, and the server features an automatically generated activity log that can be exported to a variety of programs for further analysis.

On the client side, the Apple Remote Access Client software is also designed with efficiency and productivity in mind. From its single-step installation to such productivity-enhancing features as full Mac OS integration and extensive connection-management capabilities, it provides everything users need to help them get their work done easily and efficiently—wherever they are.

Users can also be confident that their work will be secure. The Apple Remote Access MultiPort Server offers a host of sophisticated security features that allow administrators to maintain the integrity of the network. These features—such as password aging, location validation, and the ability to filter access to services—make it one of the most secure remote access servers available. And because its security architecture is supported by leading third-party security vendors, administrators can choose to augment the server's built-in security features with additional challenge-and-response security modules.



Mac™ OS



# Apple Remote Access MultiPort Server 2.1

## PCI version

### Ordering Information

#### Apple Remote Access MultiPort Server

Order No. 436000Z

- Apple Remote Access MultiPort Server software and installer on CD-ROM disc (includes support for six ports)
- Apple Remote Access Client software and installer on CD-ROM disc (with license to install software on up to four client systems; additional client software can be purchased separately)
- PCI 6-port Serial Card
- Apple 6-port RS-232 Cable

#### Apple Remote Access Client (single-pack)

Order No. 402000U

#### Apple Remote Access Client

Volume licenses for Client software can be purchased for quantities of 25 or more users; consult your authorized ClarisPLUS reseller or representative for purchasing information.

Product specifications are subject to change. Check with your Claris reseller for the most current information about product specifications and configurations.

Claris distributes Apple software products and is a wholly owned subsidiary of Apple Computer, Inc.

For presales information or to order products:

#### Claris Corporation

5201 Patrick Henry Drive  
Box 58168  
Santa Clara, CA 95052-8168  
1-800-544-8554

#### Claris Canada, Inc.

3 Church Street, Suite 402  
Toronto, Ontario M5E 1M2  
1-800-361-6075  
<http://www.claris.com/>

For presales or technical information:

#### Apple Computer, Inc.

1 Infinite Loop  
Cupertino, CA 95014  
1-800-SOS-APPLE  
<http://www.apple.com/>

### Technical Specifications

#### Administrator control and monitoring

- Ability to monitor and manage server activity by port and user
- Ability to broadcast messages or send them to selected users
- Ability to adjust connection time by user
- Ability to disconnect any single user or all users

#### Security

- User name and password authentication
- Adjustable password length
- Filtering of network services by account
- Ability to disallow client use of Save Password option
- Account disable after specified number of password failures
- Password aging
- External security architecture (for example, for providing challenge-and-response authentication through a third-party security module)
- Callback feature that verifies the user's identity by returning calls to a predetermined phone number
- Activity log for recording user and server activities
- Administrative password option

#### Modem support and scripts

- Modem scripts are available for a range of Hayes-compatible modems and ISDN terminal adapters.
- Additional scripts may be available. Contact your modem manufacturer for more details.
- If you understand connection control languages (CCLs) and are an experienced programmer, you may be able to write the necessary modem script yourself. The Apple Remote Access Modem Toolkit includes everything you need to write these scripts.

#### Network types supported

- Support for any AppleTalk network; the most common network choices include:
  - LocalTalk
  - Ethernet
  - Token Ring

#### Connection types supported

- Standard telephone
- Cellular\*
- ISDN\*

\* ISDN or cellular support requires additional third-party products.

#### Error detection/data compression

- Includes several built-in components that allow for error-free and optimized delivery of data
  - Smart buffering (developed by Apple Computer, Inc.) for data-transfer optimization
  - MNP, an industry standard for error detection
  - V.42bis, an industry standard for data compression

#### Specifications

- Maximum number of simultaneous connections: 16
- User name maximum length: 31 characters
- Password maximum length: 8 characters
- Total number of user records: 8,192
- Maximum connect time: selectable
- Maximum number of activity log entries: 32,767

#### Licensing information

- Comes with license to install Apple Remote Access MultiPort software on a single Macintosh and to install Apple Remote Access Client software on up to six systems.
- Additional client software must be purchased or licensed separately; consult your authorized Apple reseller or representative for information.

#### System requirements

##### For the server side

- A Power Macintosh with 1 or more PCI expansion slots and at least 8MB of RAM
- Macintosh System Software 7.5 or later
- A hard disk drive, CD-ROM drive, and an Apple SuperDrive floppy disk drive
- Apple Remote Access Serial Card and Apple 6-port RS-232 Cable (included)
- One or more Hayes-compatible 9,600 bps/V.32 or higher-speed modems
- Apple Remote Access Client

##### For the client side

- A Macintosh computer with at least 4MB of RAM (8MB for Power Macintosh)
- Macintosh System Software 7.1 or later (version 7.5 or later required for Power Macintosh)
- An Apple or other Hayes-compatible modem (14.4 kbps or faster recommended)
- Modem cable with hardware handshaking
- Apple Remote Access Personal Server or MultiPort Server (or any Apple Remote Access-compatible server)

© 1996 Apple Computer, Inc. All rights reserved. Apple, the Apple logo, Apple SuperDrive, AppleTalk, LocalTalk, Macintosh and, Power Macintosh are registered trademarks. Finder and Mac are trademarks of Apple Computer, Inc. All other trademarks are the property of their respective owners. Mention of non-Apple products is for informational purposes and constitutes neither an endorsement nor a recommendation. Apple assumes no responsibility with regard to the selection, performance, or use of these products. All understandings, agreements, or warranties, if any, take place directly between the vendors and the prospective users.  
May 1996. Printed in U.S.A.  
U96506-034A